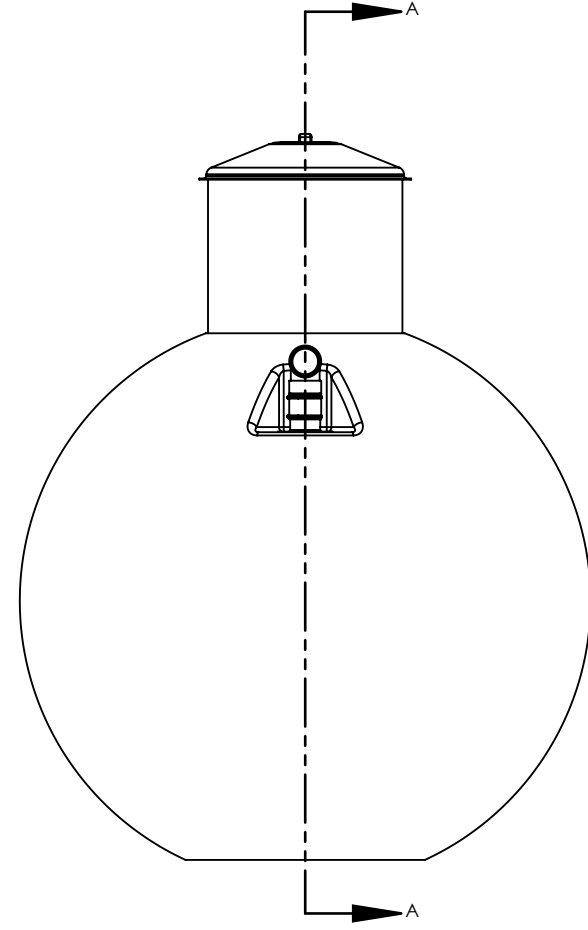
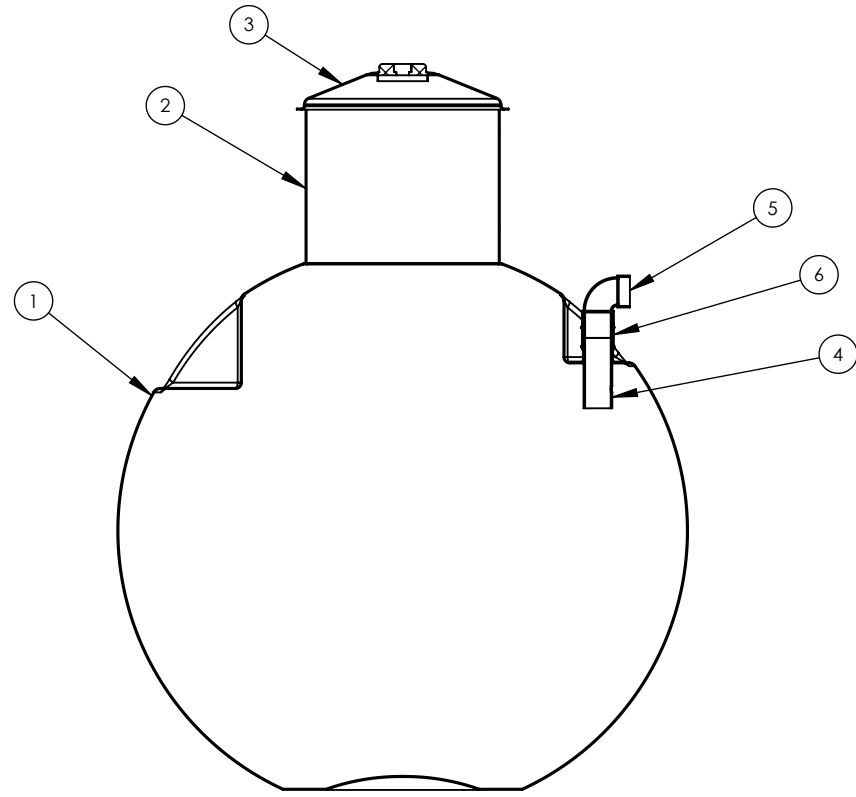


4

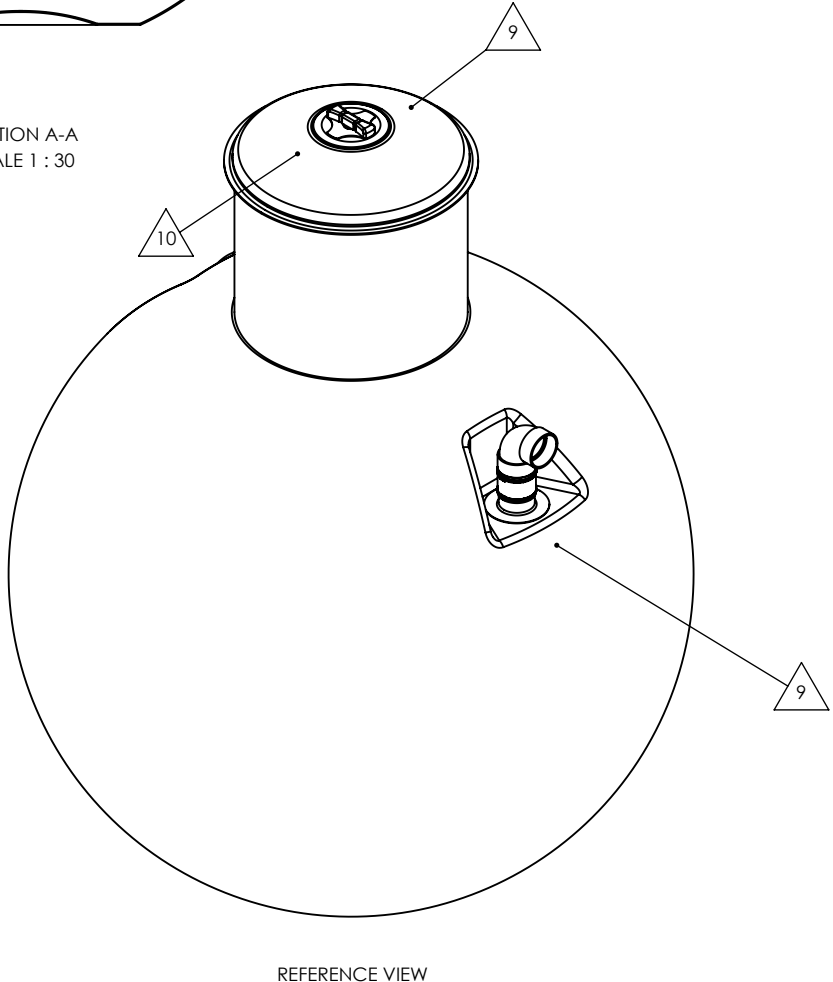
3

2

1



SECTION A-A  
SCALE 1 : 30



REFERENCE VIEW

ITEM NO.	PART NUMBER	QTY.
1	CECGLB-1000IG-H-TANK-.6	1
2	CECGLB-30IN-MANWAY-COLLAR-24IN	1
3	CEC-30IN-MANWAY-LID-NORWESCO	1
4	CEC-4INX11IN-LONG-FITTING-ASSY-W-1IN-HOLE	1
5	4INX90DEG-ABS-DWV-SHORT TURN ELBOW ASSY W 4IN EXTENSION	1
6	4IN-FERNCO-FLEX-CPLG	1

NOTES:

- 1. HOLDING STYLE TANK
- 2. BURIAL DEPTH: UPTO 2FT (0.6 METERS) FROM GRADE TO TOP OF TANK
- 3. SPECIFIC GRAVITY: 1.1
- 4. RESIN: ORTHOPHTHALIC POLYESTER
- 5. MATERIAL: SPRAY CHOP HLU WITH 24 OZ WOVEN ROVING WHERE REQUIRED
- 6. DESIGNED AND CERTIFIED TO CSA B66 STANDARDS
- 7. OPTIONAL BELLED MANWAY EXTENSION LENGTHS AVAILABLE.
- 8. OPTIONAL MATERIAL FOR FITTINGS ABS, PVC, SDR AVAILABLE IN 4 INCH & 6 INCH CONFIGURATIONS.
- 9. TANK ID DECAL ATTACHED, AS SHOWN ON REFERENCE VIEW.
- 10. DANGER DO NOT ENTER DECAL WILL BE ATTACHED TO TOP OF LID, AS SHOWN ON REFERENCE VIEW



DIMENSIONS ARE IN INCHES  
*UNLESS OTHERWISE SPECIFIED*

TOLERANCES:  
.X ±0.12  
.XX ±0.06  
.XXX ±0.03  
ANGULAR ±0.5°  
UNLESS OTHERWISE SPECIFIED

MATERIAL: FRP

INITIAL RELEASE DATE:

DRAWN BY: AZ

CHECKED BY:

REV	DATE	DRN	CHK	DESCRIPTION	INITIAL RELEASE
AZ					

1035 MISSION STREET  
WINNIPEG, MB, CANADA R2J 0A4  
(204) 233-0671  
WWW.CARLSONCOMPOSITES.COM  
INFO@CARLSONCOMPOSITES.COM

**CARLSON ENGINEERED COMPOSITES**

THE INFORMATION CONTAINED IN THIS DRAWING IS THE SOLE PROPERTY OF CARLSON ENGINEERED COMPOSITES INC.. ANY REPRODUCTION IN PART OR AS A WHOLE WITHOUT THE WRITTEN PERMISSION OF CARLSON ENGINEERED COMPOSITES INC. IS PROHIBITED.

CSA LABEL:	CGR-4546H.6 HGN-4546H.6 CCGLB-1000IG-H.6	JOB NO:
DWG. NO.	CECGLB-1000IG-H.6	SIZE <b>B</b>
SCALE: NTS	ESTIMATED WEIGHT: 291 LBS/131 KG	REV <b>A</b>
		SHEET 1 OF 4

4

3

2

1

B

B

A

A

4

3

2

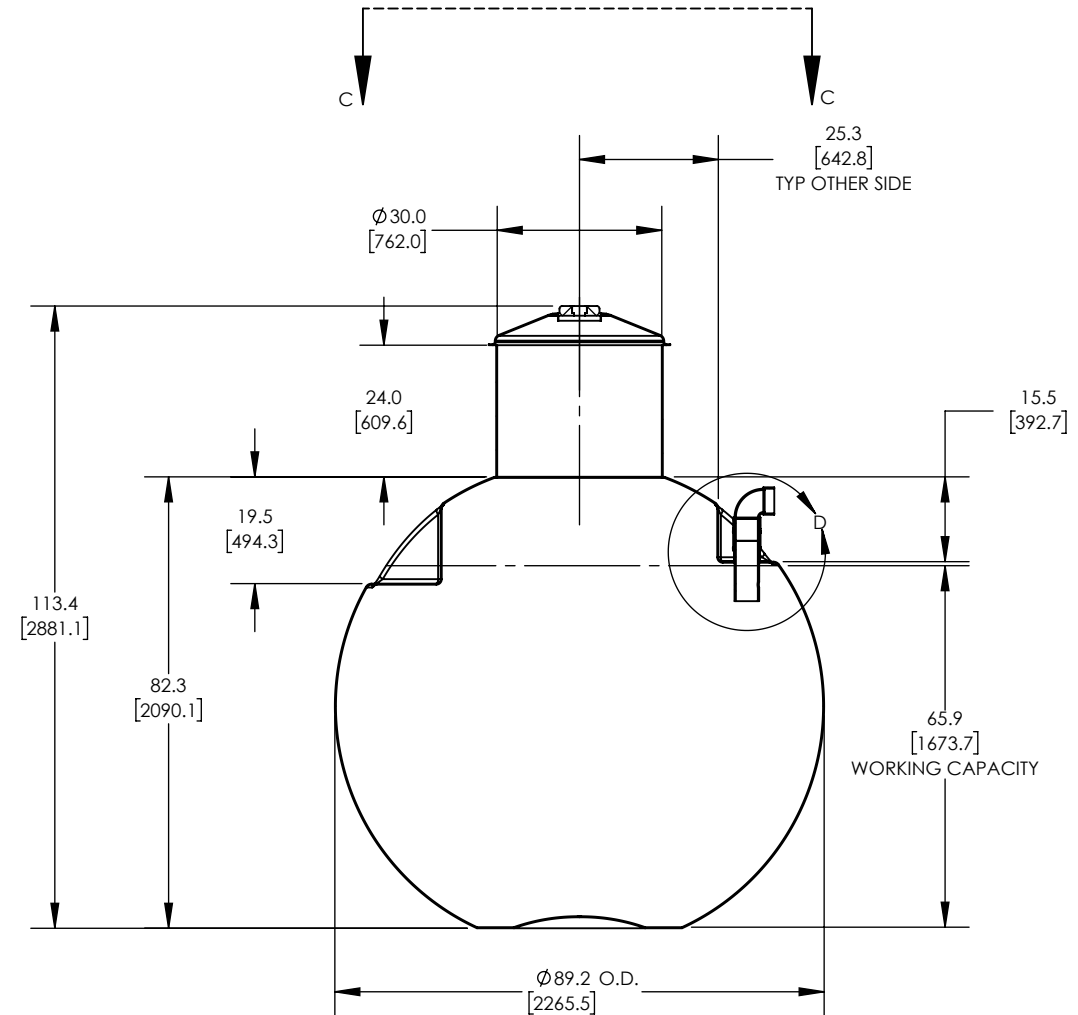
1

B

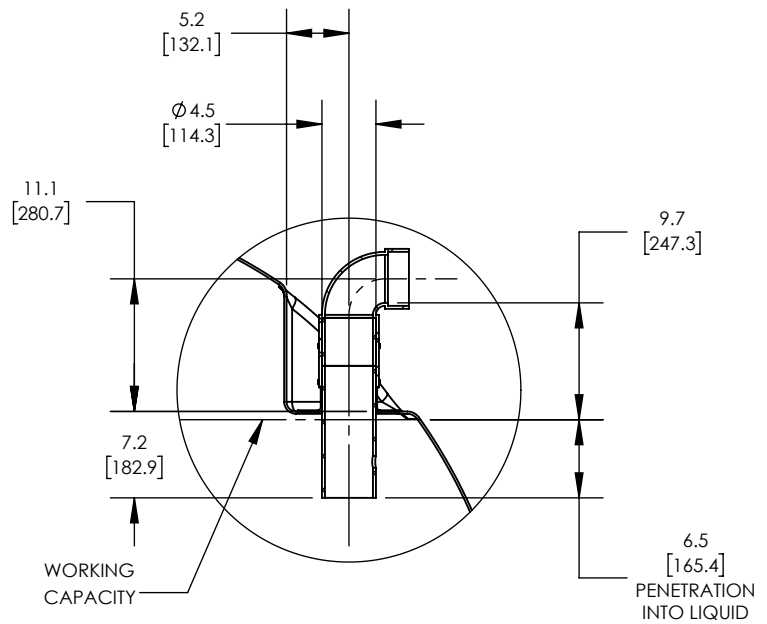
B

A

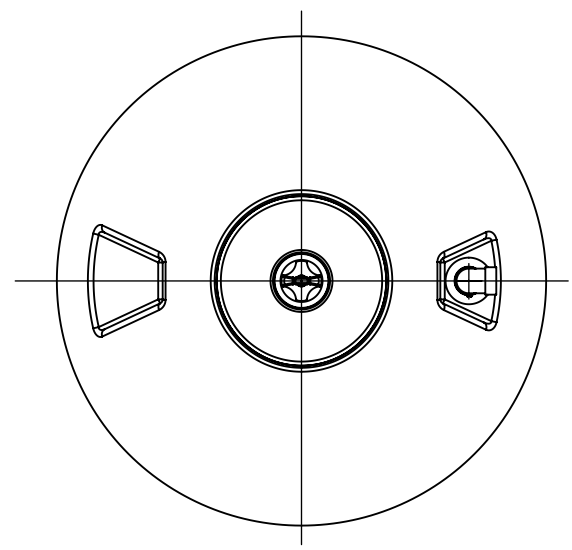
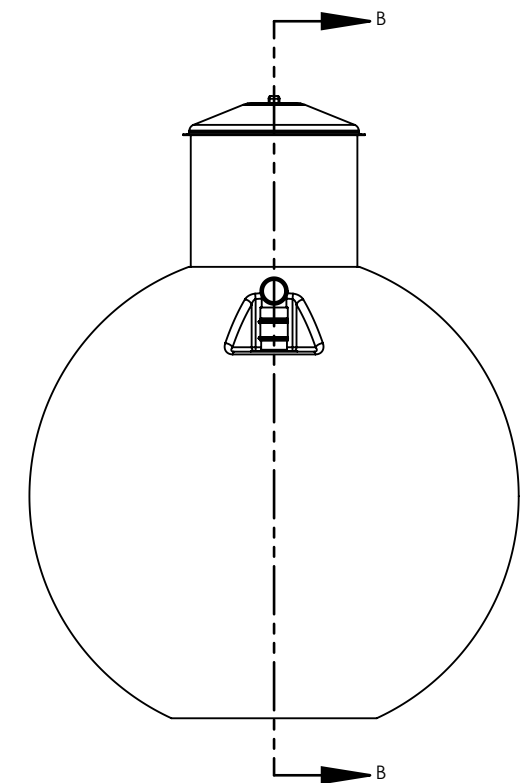
A



SECTION B-B  
SCALE 1 : 35



DETAIL D  
SCALE 1 : 16



VIEW C-C  
SCALE 1 : 35

**DIMENSIONS ARE IN INCHES**  
*UNLESS OTHERWISE SPECIFIED*

**TOLERANCES:**  
.X ±0.12  
.XX ±0.06  
.XXX ±0.03  
ANGULAR ±0.5°  
UNLESS OTHERWISE SPECIFIED

**MATERIAL:**  
FRP

**INITIAL RELEASE DATE:**

**DRAWN BY:** AZ

**CHECKED BY:**

REV	DATE	DRN	CHK	DESCRIPTION	AZ	INITIAL RELEASE
<p>1035 MISSION STREET WINNIPEG, MB, CANADA R2J 0A4 (204) 233-0671 WWW.CARLSONCOMPOSITES.COM INFO@CARLSONCOMPOSITES.COM</p> <p>THE INFORMATION CONTAINED IN THIS DRAWING IS THE SOLE PROPERTY OF CARLSON ENGINEERED COMPOSITES INC.. ANY REPRODUCTION IN PART OR AS A WHOLE WITHOUT THE WRITTEN PERMISSION OF CARLSON ENGINEERED COMPOSITES INC. IS PROHIBITED.</p>					<p>CSA LABEL: CGR-4546H.6 HGN-4546H.6 CECGLB-1000IG-H.6</p>	
<p>DWG. NO. CECGLB-1000IG-H.6</p>					SIZE	REV
<p>SCALE: NTS ESTIMATED WEIGHT: 291 LBS/131 KG</p>					B	A
					SHEET 2 OF 4	

4

3

2

1

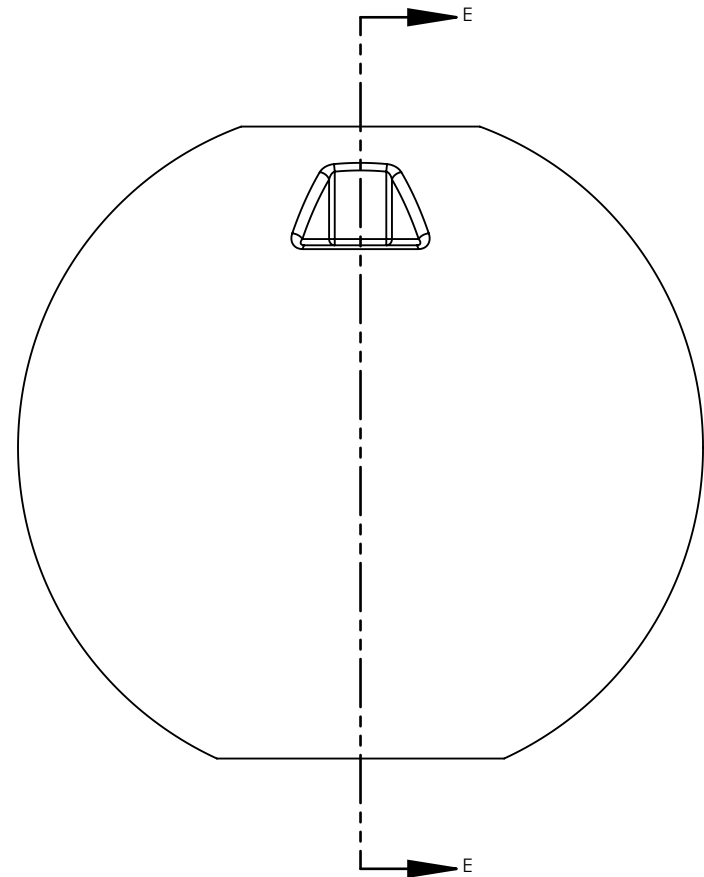
SEPTIC: AIR SPACE  
VOLUME: 137 IMP. GAL  
[622 LITRES]

SEPTIC: WORKING CAPACITY  
VOLUME: 1163 IMP. GAL  
[5287 LITRES]

16.0  
[406.2]  
AIR SPACE

65.9  
[1673.9]  
WORKING CAPACITY

SECTION E-E  
SCALE 1 : 25



B

B

A

A

VOLUME TABLE

COMPARTMENT	WORKING CAPACITY		AIR SPACE		TOTAL	
	IMP. GAL	LITRES	IMP. GAL	LITRES	IMP. GAL	LITRES
SEPTIC	1163	5287	137	622	1300	5909

DIMENSIONS ARE  
IN INCHES  
*UNLESS OTHERWISE SPECIFIED*

TOLERANCES:  
.X ±0.12  
.XX ±0.06  
.XXX ±0.03  
ANGULAR ±0.5°  
*UNLESS OTHERWISE SPECIFIED*

MATERIAL:  
FRP

INITIAL RELEASE DATE:

DRAWN BY: AZ

CHECKED BY:

REV	DATE	DRN	CHK	DESCRIPTION
A		AZ		INITIAL RELEASE

**CARLSON ENGINEERED COMPOSITES**  
 1035 MISSION STREET  
 WINNIPEG, MB, CANADA R2J 0A4  
 (204) 233-0671  
 WWW.CARLSONCOMPOSITES.COM  
 INFO@CARLSONCOMERCIAL.COM

THE INFORMATION CONTAINED IN THIS DRAWING IS THE SOLE PROPERTY OF CARLSON ENGINEERED COMPOSITES INC.. ANY REPRODUCTION IN PART OR AS A WHOLE WITHOUT THE WRITTEN PERMISSION OF CARLSON ENGINEERED COMPOSITES INC. IS PROHIBITED.

CSA LABEL: CGR-4546H.6  
HGN-4546H.6  
CECGLB-1000IG-H.6

DWG. NO. CECGLB-1000IG-H.6

SCALE: NTS ESTIMATED WEIGHT: 291 LBS/131 KG

JOB NO:

SIZE B REV A

SHEET 3 OF 4

4

3

2

1