

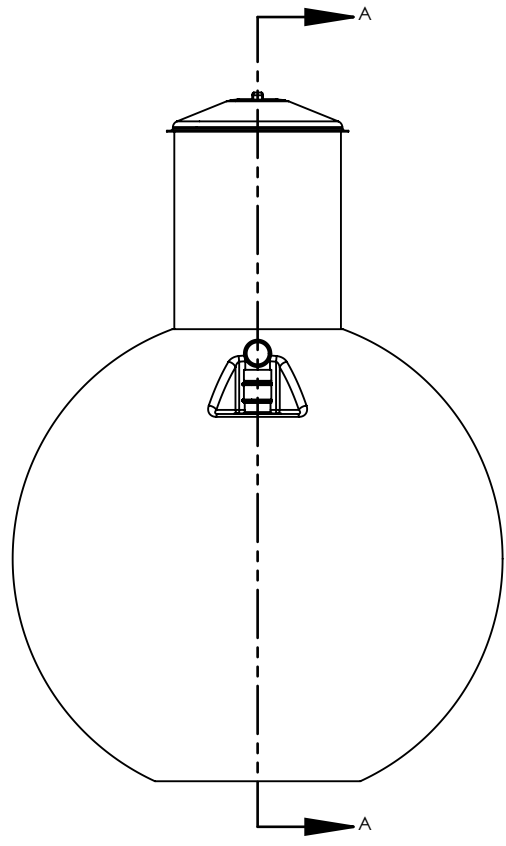
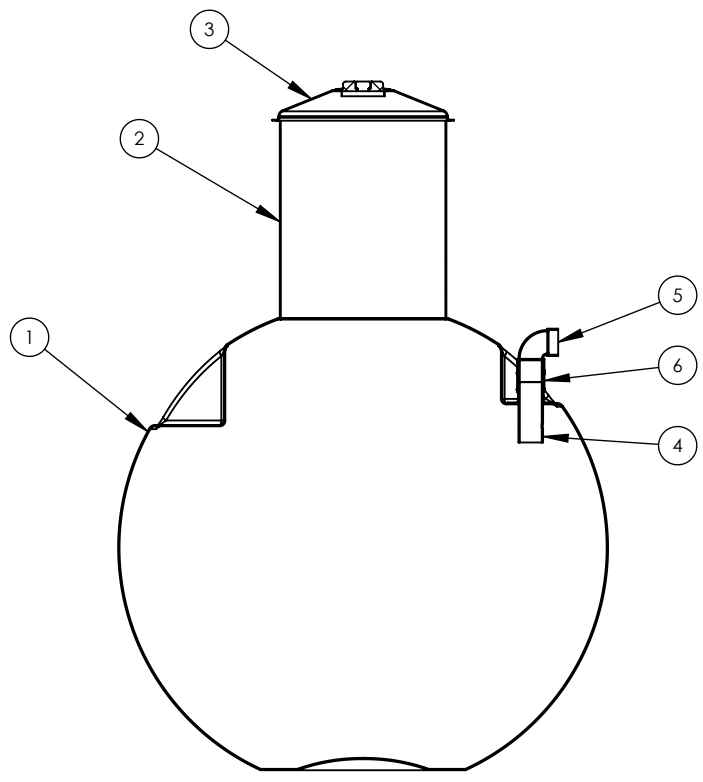
4

3

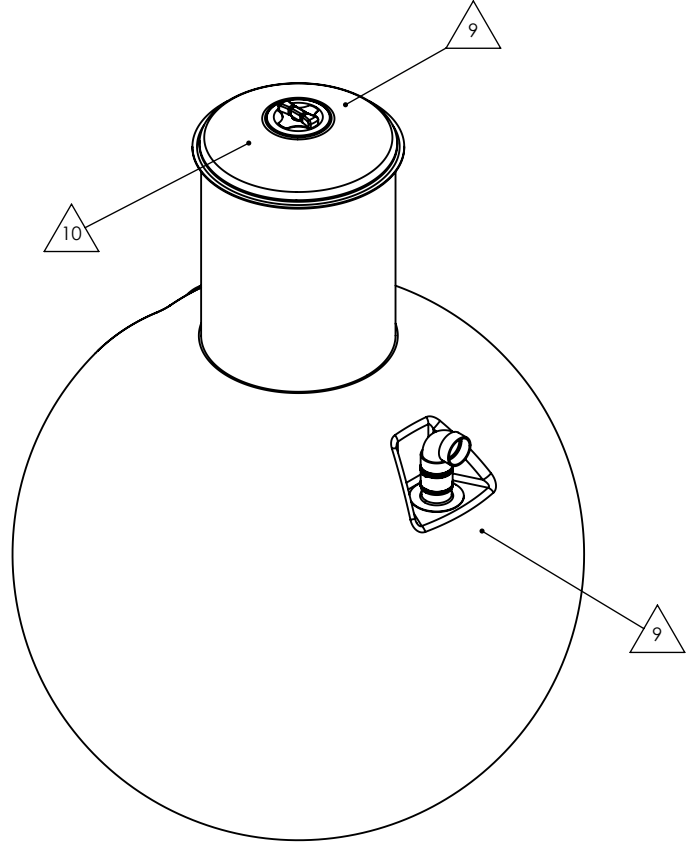
2

1

ITEM NO.	PART NUMBER	QTY.
1	CECGLB-1000IG-H-TANK-2.14	1
2	CECGLB-30IN-MANWAY-COLLAR-36IN	1
3	CEC-30IN-MANWAY-LID-NORWESCO	1
4	CEC-4INX1 1IN-LONG-FITTING-ASSY-W-1IN-HOLE	1
5	4INX90DEG-ABS-DWV-SHORT TURN ELBOW ASSY W 4IN EXTENSION	1
6	4IN-FERNCO-FLEX-CPLG	1



SECTION A-A
SCALE 1 : 35



REFERENCE VIEW

NOTES:

1. HOLDING STYLE TANK
2. BURIAL DEPTH: UPTO 7FT (2.14 METERS) FROM GRADE TO TOP OF TANK
3. SPECIFIC GRAVITY: 1.1
4. RESIN: ORTHOPHTHALIC POLYESTER
5. MATERIAL: SPRAY CHOP HLU WITH 24 OZ WOVEN ROVING WHERE REQUIRED
6. DESIGNED AND CERTIFIED TO CSA B66 STANDARDS
7. OPTIONAL BELLED MANWAY EXTENSION LENGTHS AVAILABLE.
8. OPTIONAL MATERIAL FOR FITTINGS ABS, PVC, SDR AVAILABLE IN 4 INCH & 6 INCH CONFIGURATIONS.
9. TANK ID DECAL ATTACHED, AS SHOWN ON REFERENCE VIEW.
10. DANGER DO NOT ENTER DECAL WILL BE ATTACHED TO TOP OF LID, AS SHOWN ON REFERENCE VIEW



A		AZ		INITIAL RELEASE	
REV	DATE	DRN	CHK	DESCRIPTION	
DIMENSIONS ARE IN INCHES <i>UNLESS OTHERWISE SPECIFIED</i>				1035 MISSION STREET WINNIPEG, MB, CANADA R2J 0A4 (204) 233-0671 WWW.CARLSONCOMPOSITES.COM INFO@CARLSONCOMPOSITES.COM	
TOLERANCES: .X ±0.12 .XX ±0.06 .XXX ±0.03 ANGULAR ±0.5° <i>UNLESS OTHERWISE SPECIFIED</i>		MATERIAL: FRP		THE INFORMATION CONTAINED IN THIS DRAWING IS THE SOLE PROPERTY OF CARLSON ENGINEERED COMPOSITES INC.. ANY REPRODUCTION IN PART OR AS A WHOLE WITHOUT THE WRITTEN PERMISSION OF CARLSON ENGINEERED COMPOSITES INC. IS PROHIBITED.	
INITIAL RELEASE DATE:		DRAWN BY: AZ		CSA LABEL: CGR-4546H2.14 HGN-4546H2.14 CECGLB-1000IG-H2.14	JOB NO:
CHECKED BY:		SCALE: NTS		DWG. NO. CECGLB-1000IG-H2.14	SIZE B
		ESTIMATED WEIGHT: 379 LBS/171 KG		REV A	
				SHEET 1 OF 4	

4

3

2

1

B

B

A

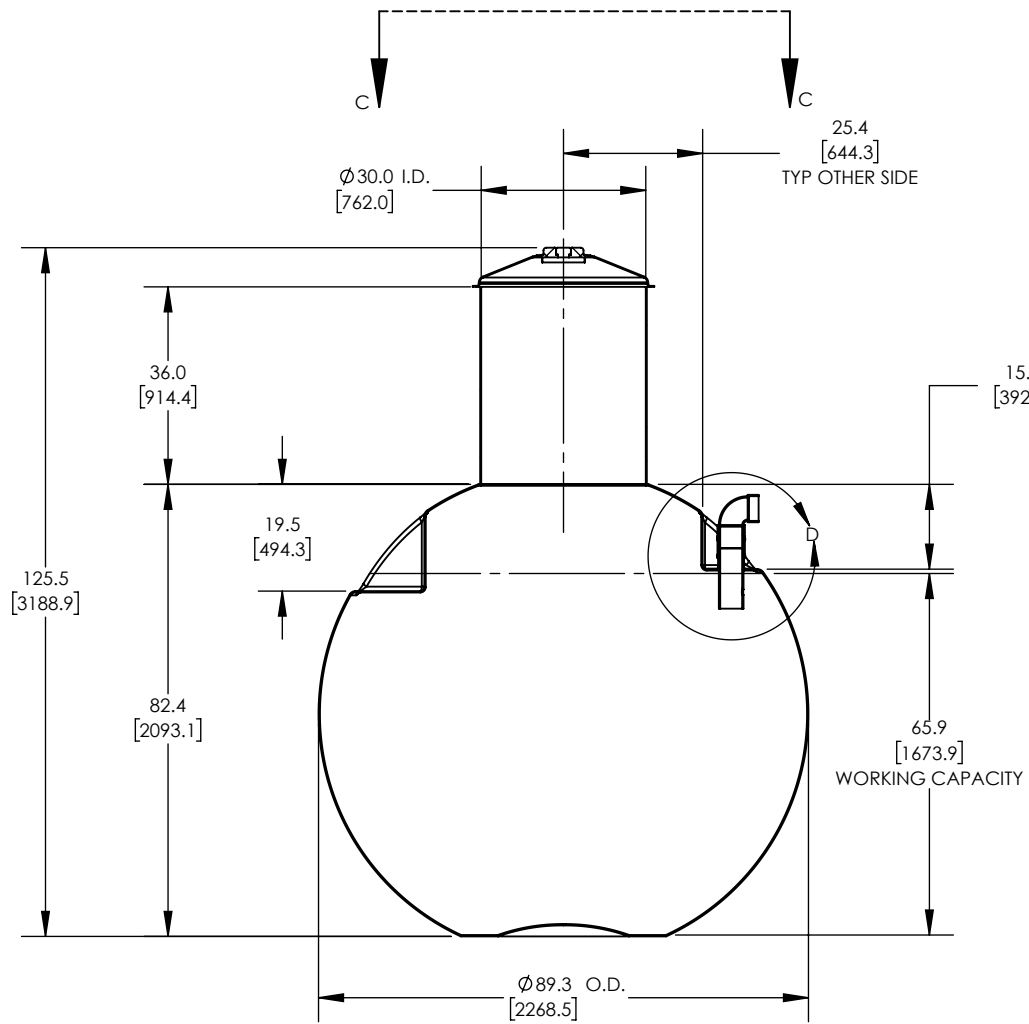
A

4

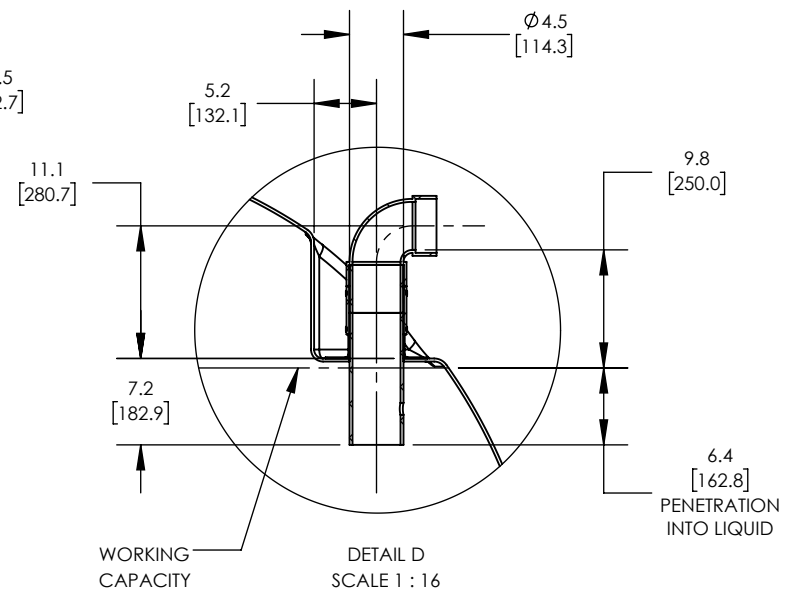
3

2

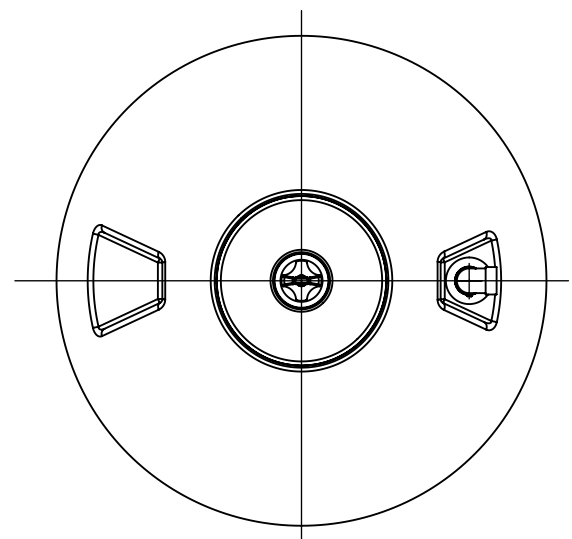
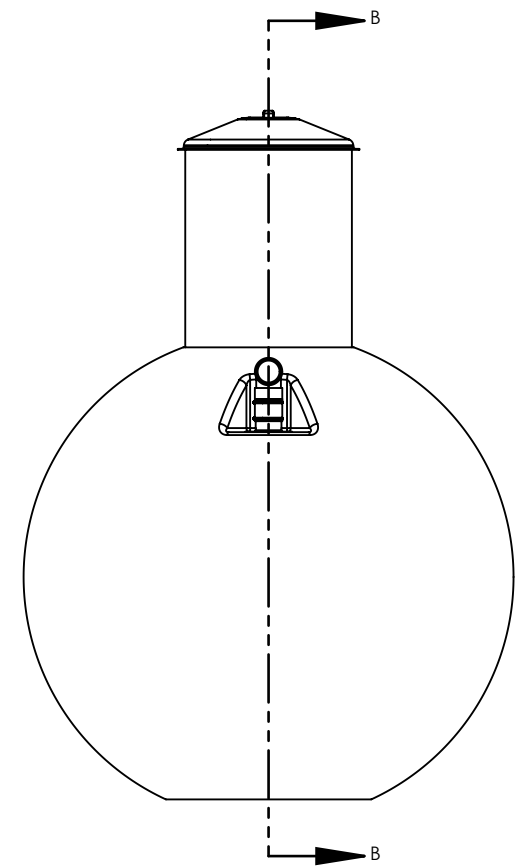
1



SECTION B-B
SCALE 1 : 35



DETAIL D
SCALE 1 : 16



VIEW C-C
SCALE 1 : 35

DIMENSIONS ARE
IN INCHES
UNLESS OTHERWISE SPECIFIED

TOLERANCES:
.X ±0.12
.XX ±0.06
.XXX ±0.03
ANGULAR ±0.5°
UNLESS OTHERWISE SPECIFIED

MATERIAL:
FRP

INITIAL RELEASE DATE:

DRAWN BY: AZ

CHECKED BY:

A		AZ		INITIAL RELEASE
REV	DATE	DRN	CHK	DESCRIPTION

CARLSON ENGINEERED COMPOSITES
 1035 MISSION STREET
 WINNIPEG, MB, CANADA R2J 0A4
 (204) 233-0671
 WWW.CARLSONCOMPOSITES.COM
 INFO@CARLSONCOMPOSITES.COM

THE INFORMATION CONTAINED IN THIS DRAWING IS THE SOLE PROPERTY OF CARLSON ENGINEERED COMPOSITES INC.. ANY REPRODUCTION IN PART OR AS A WHOLE WITHOUT THE WRITTEN PERMISSION OF CARLSON ENGINEERED COMPOSITES INC. IS PROHIBITED.

CSA LABEL:	CGR-4546H2.14 HGN-4546H2.14 CECGLB-1000IG-H2.14	JOB NO:
------------	---	---------

DWG. NO.	CECGLB-1000IG-H2.14	SIZE	REV
		B	A

SCALE: NTS	ESTIMATED WEIGHT: 379 LBS/171 KG	SHEET 2 OF 4
------------	----------------------------------	--------------

B

B

A

A

4

3

2

1

4

3

2

1

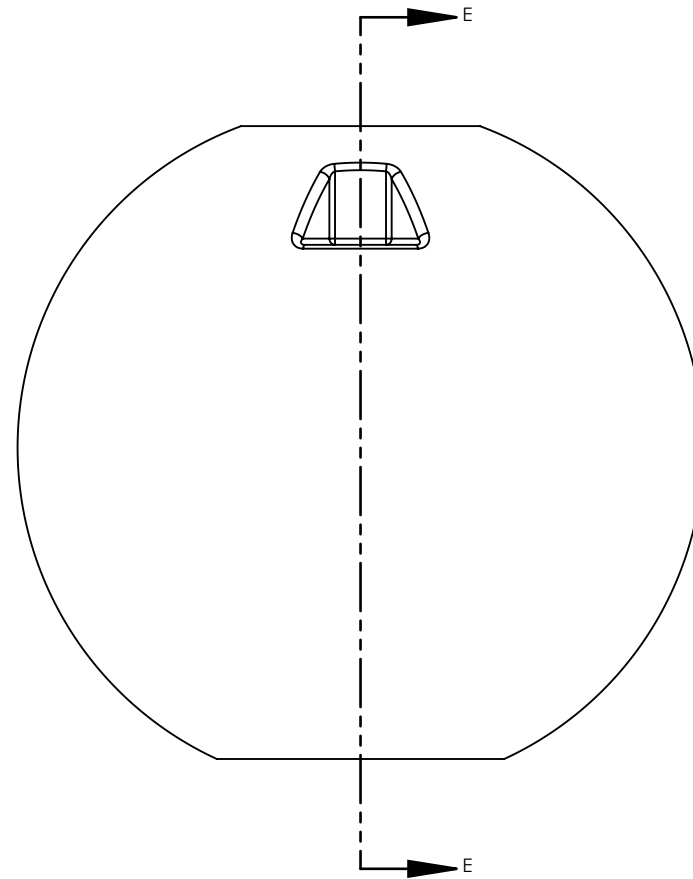
SEPTIC: AIR SPACE
VOLUME: 137 IMP. GAL
[622 LITRES]

SEPTIC: WORKING CAPACITY
VOLUME: 1163 IMP. GAL
[5287 LITRES]

16.0
[405.2]
AIR SPACE

65.9
[1675.0]
WORKING CAPACITY

SECTION E-E
SCALE 1 : 25



VOLUME TABLE						
COMPARTMENT	WORKING CAPACITY		AIR SPACE		TOTAL	
	IMP. GAL	LITRES	IMP. GAL	LITRES	IMP. GAL	LITRES
SEPTIC	1163	5287	137	622	1300	5909

DIMENSIONS ARE
IN INCHES
UNLESS OTHERWISE SPECIFIED

TOLERANCES:
.X ±0.12
.XX ±0.06
.XXX ±0.03
ANGULAR ±0.5°
UNLESS OTHERWISE SPECIFIED

MATERIAL:
FRP

INITIAL RELEASE DATE:

DRAWN BY: AZ

CHECKED BY:

REV	DATE	DRN	CHK	DESCRIPTION
A		AZ		INITIAL RELEASE

1035 MISSION STREET
WINNIPEG, MB, CANADA R2J 0A4
(204) 233-0671
WWW.CARLSONCOMPOSITE.COM
INFO@CARLSONCOMPOSITES.COM

THE INFORMATION CONTAINED IN THIS DRAWING IS THE SOLE PROPERTY OF CARLSON ENGINEERED COMPOSITES INC.. ANY REPRODUCTION IN PART OR AS A WHOLE WITHOUT THE WRITTEN PERMISSION OF CARLSON ENGINEERED COMPOSITES INC. IS PROHIBITED.

CSA LABEL: CGR-4546H2.14
HGN-4546H2.14
CECGLB-1000IG-H2.14

DWG. NO. CECGLB-1000IG-H2.14

SCALE: NTS ESTIMATED WEIGHT: 379 LBS/171 KG

JOB NO:

SIZE B REV A

SHEET 3 OF 4

4

3

2

1