

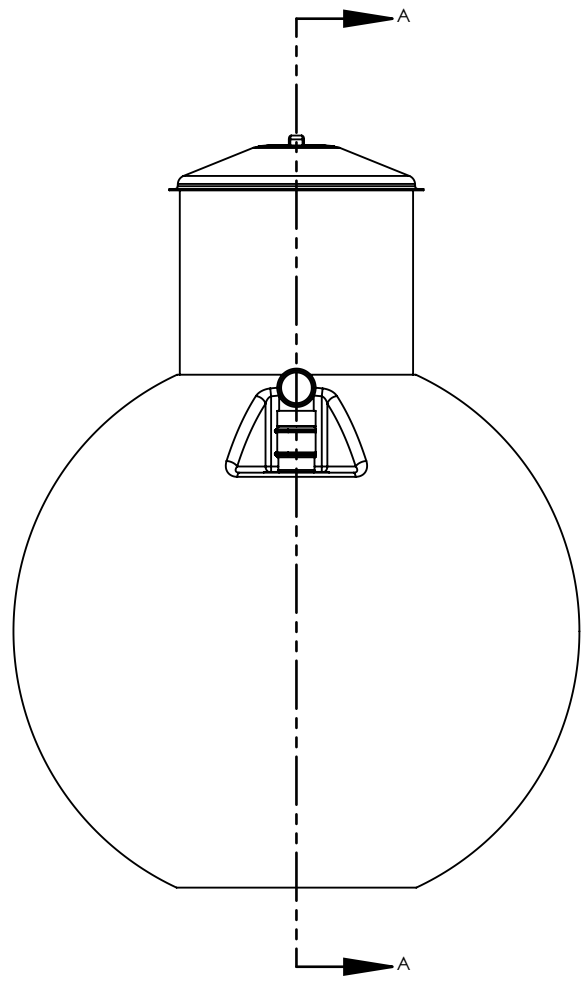
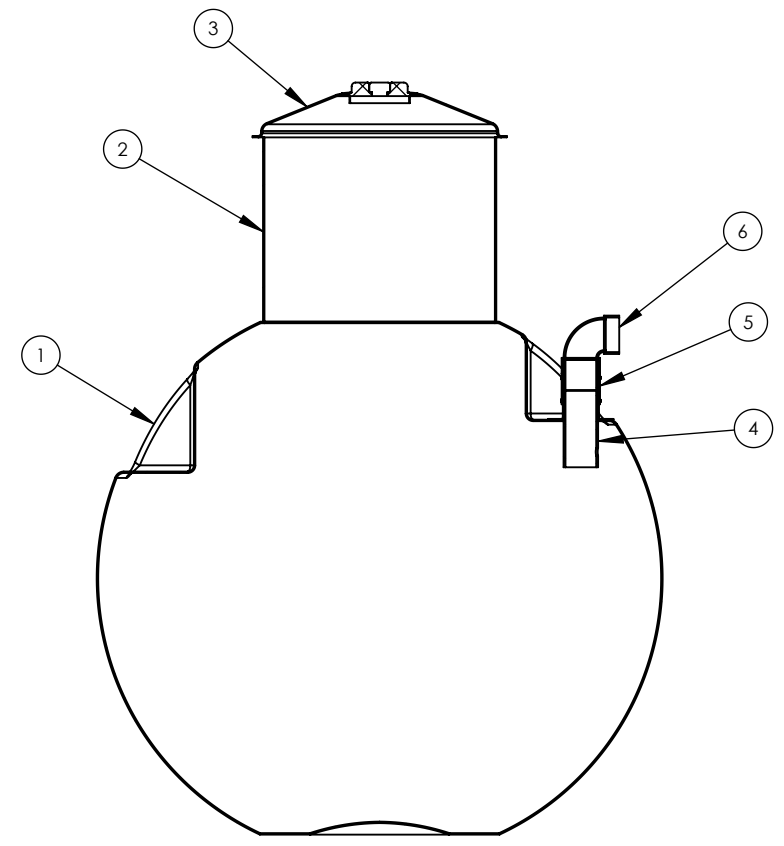
4

3

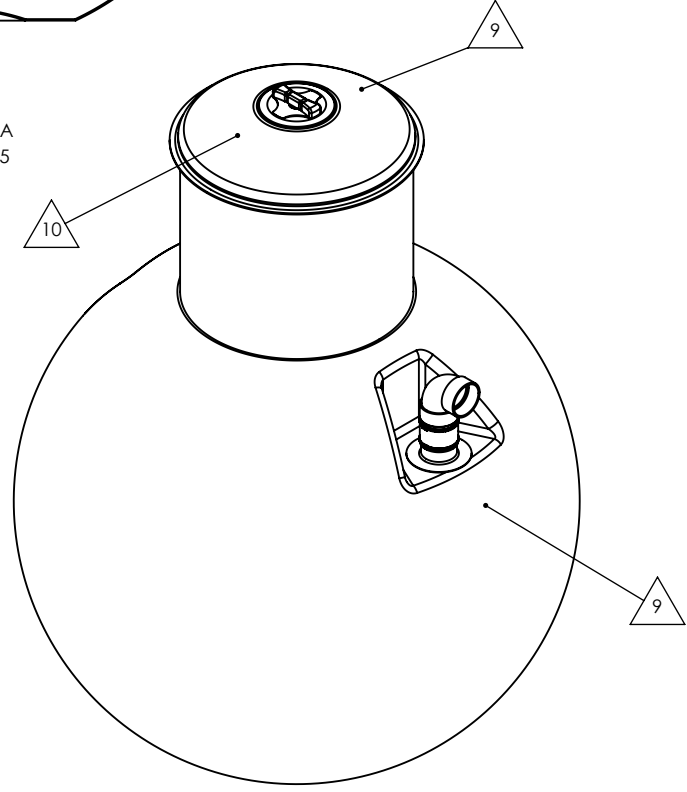
2

1

ITEM NO.	PART NUMBER	QTY.
1	CECGLB-750IG-H-TANK-.6	1
2	CECGLB-30IN-MANWAY-COLLAR-24IN	1
3	CEC-30IN-MANWAY-LID-NORWESCO	1
4	CEC-4INX10IN-LONG-FITTING-ASSY-W-1IN-HOLE	1
5	4IN-FERNCO-FLEX-CPLG	1
6	4INX90DEG-ABS-DWV-SHORT TURN ELBOW ASSY W 4IN EXTENSION	1



SECTION A-A  
SCALE 1 : 25



REFERENCE VIEW

NOTES:

- 1. HOLDING STYLE TANK
- 2. BURIAL DEPTH: UPTO 2FT (0.6 METERS) FROM GRADE TO TOP OF TANK
- 3. SPECIFIC GRAVITY: 1.1
- 4. RESIN: ORTHOPHTHALIC POLYESTER
- 5. MATERIAL: SPRAY CHOP HLU WITH 24 OZ WOVEN ROVING WHERE REQUIRED
- 6. DESIGNED AND CERTIFIED TO CSA B66 STANDARDS
- 7. OPTIONAL BELLED MANWAY EXTENSION LENGTHS AVAILABLE.
- 8. OPTIONAL MATERIAL FOR FITTINGS ABS, PVC, SDR AVAILABLE IN 4 INCH & 6 INCH CONFIGURATIONS.
- 9. TANK ID DECAL ATTACHED, AS SHOWN ON REFERENCE VIEW.
- 10. DANGER DO NOT ENTER DECAL WILL BE ATTACHED TO TOP OF LID, AS SHOWN ON REFERENCE VIEW



DIMENSIONS ARE IN INCHES  
UNLESS OTHERWISE SPECIFIED

TOLERANCES:  
.X ±0.12  
.XX ±0.06  
.XXX ±0.03  
ANGULAR ±0.5°  
UNLESS OTHERWISE SPECIFIED

MATERIAL: FRP

INITIAL RELEASE DATE:

DRAWN BY: AZ

CHECKED BY:

REV	DATE	DRN	CHK	DESCRIPTION	INITIAL RELEASE
AZ					

1035 MISSION STREET  
WINNIPEG, MB, CANADA R2J 0A4  
(204) 233-0671  
WWW.CARLSONCOMPOSITES.COM  
INFO@CARLSONCOMPOSITES.COM

**CARLSON ENGINEERED COMPOSITES**

THE INFORMATION CONTAINED IN THIS DRAWING IS THE SOLE PROPERTY OF CARLSON ENGINEERED COMPOSITES INC.. ANY REPRODUCTION IN PART OR AS A WHOLE WITHOUT THE WRITTEN PERMISSION OF CARLSON ENGINEERED COMPOSITES INC. IS PROHIBITED.

CSA LABEL:	CGR-3410H.6 HGN-3410H.6 CECGLB-750IG-H.6	JOB NO:
DWG. NO.	CECGLB-750IG-H.6	SIZE B
SCALE: NTS	ESTIMATED WEIGHT: 209 LBS/94 KG	REV A
		SHEET 1 OF 4

4

3

2

1

B

B

A

A

4

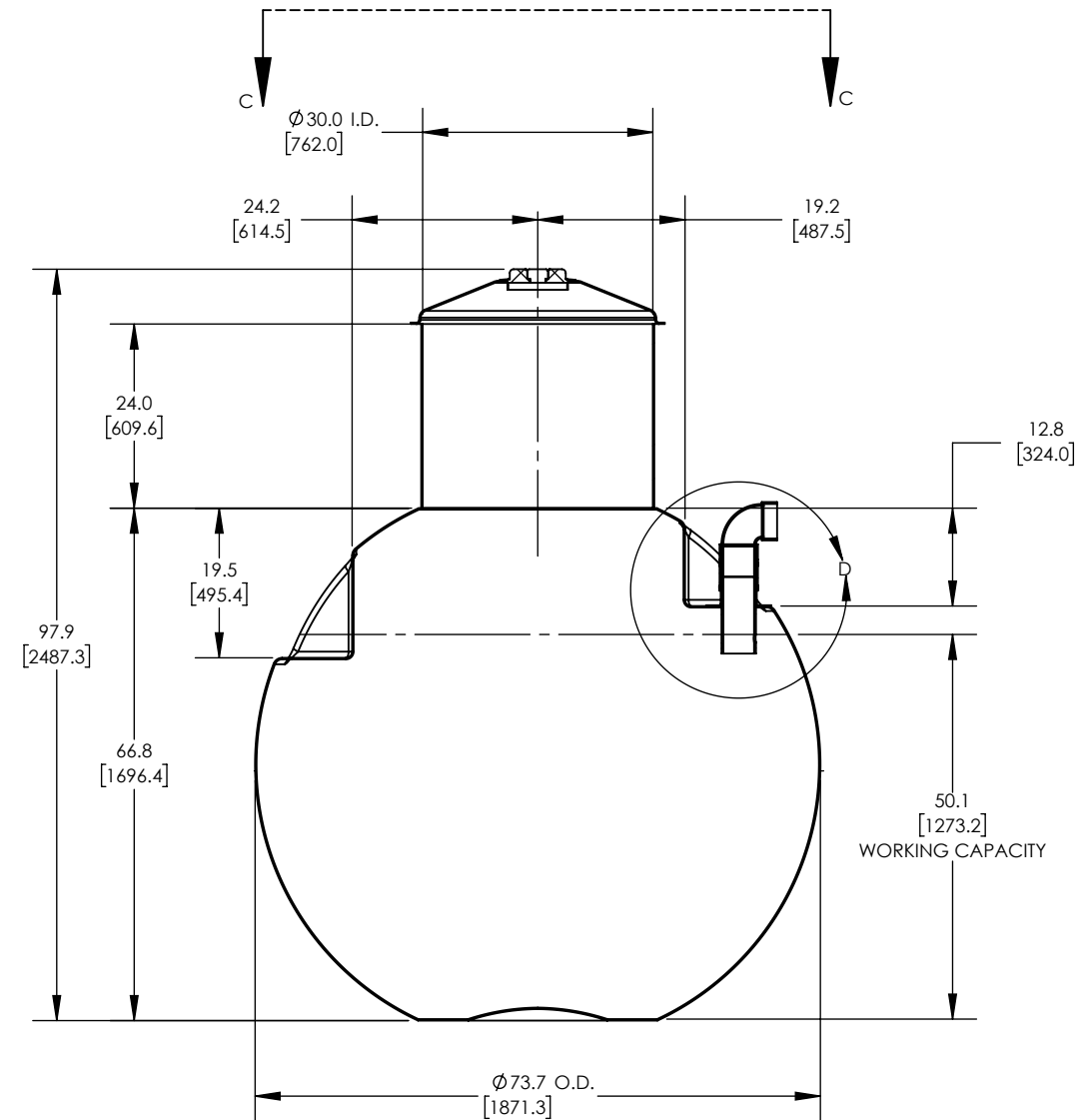
3

2

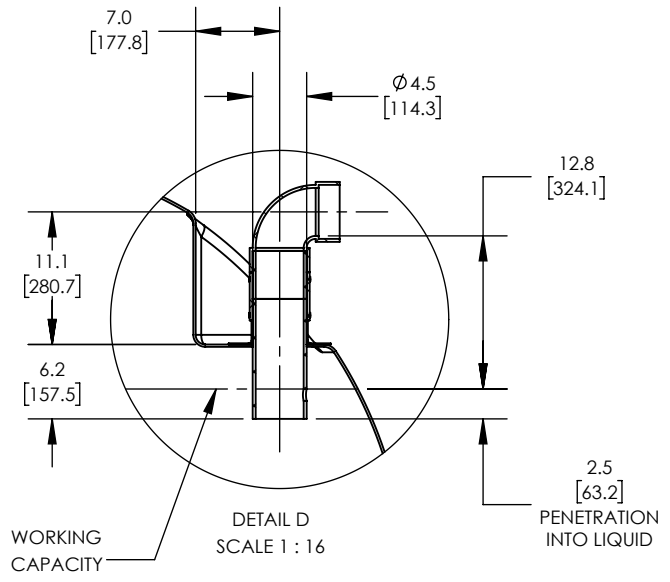
1

B

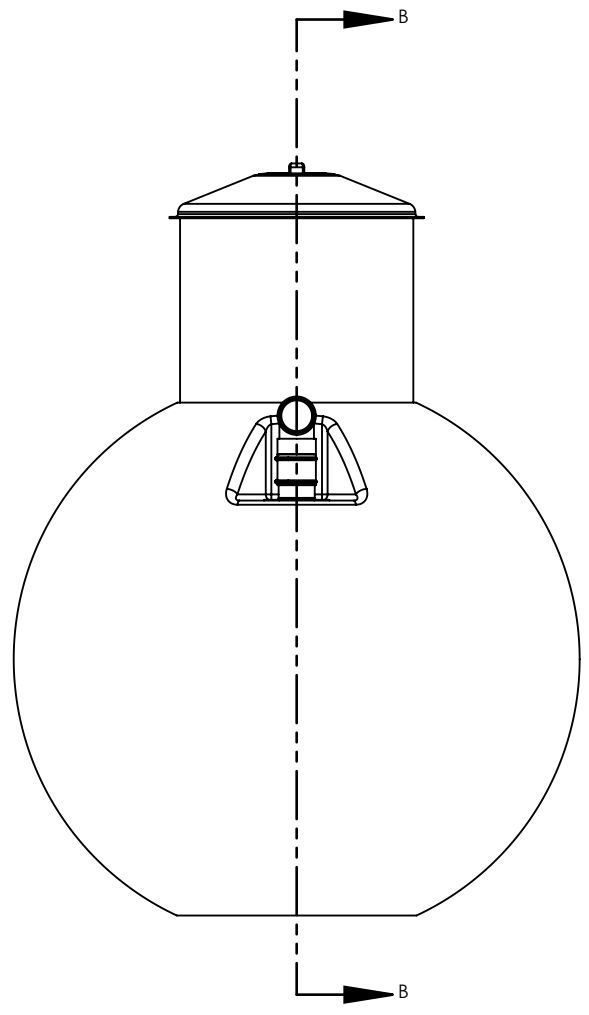
B



SECTION B-B  
SCALE 1 : 25

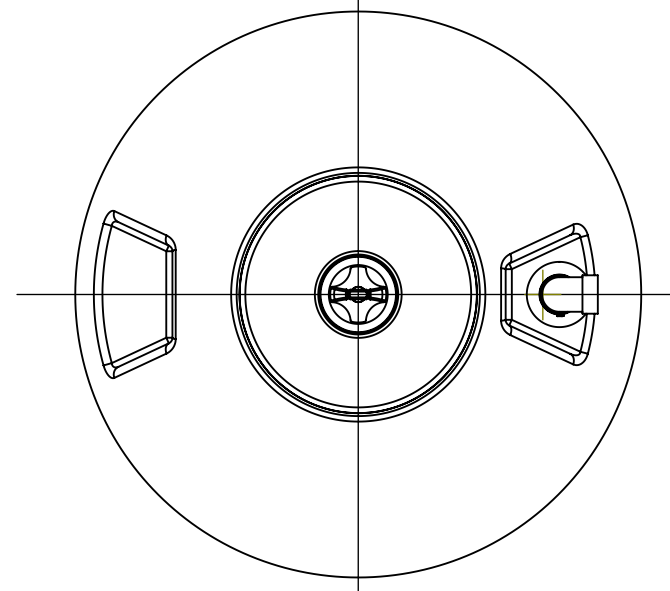


DETAIL D  
SCALE 1 : 16



A

A



VIEW C-C  
SCALE 1 : 25

DIMENSIONS ARE IN INCHES  
UNLESS OTHERWISE SPECIFIED

TOLERANCES:  
.X ±0.12  
.XX ±0.06  
.XXX ±0.03  
ANGULAR ±0.5°  
UNLESS OTHERWISE SPECIFIED

MATERIAL: FRP

INITIAL RELEASE DATE:

DRAWN BY: AZ

CHECKED BY:

A		AZ		INITIAL RELEASE
REV	DATE	DRN	CHK	DESCRIPTION
				1035 MISSION STREET WINNIPEG, MB, CANADA R2J 0A4 (204) 233-0671 WWW.CARLSONCOMPOSITES.COM INFO@CARLSONCOMPOSITES.COM
				CSA LABEL: CGR-3410H.6 HGN-3410H.6 CECGLB-750IG-H.6
DWG. NO. CECGLB-750IG-H.6				SIZE B REV A
SCALE: NTS ESTIMATED WEIGHT: 209 LBS/94 KG				SHEET 2 OF 4

4

3

2

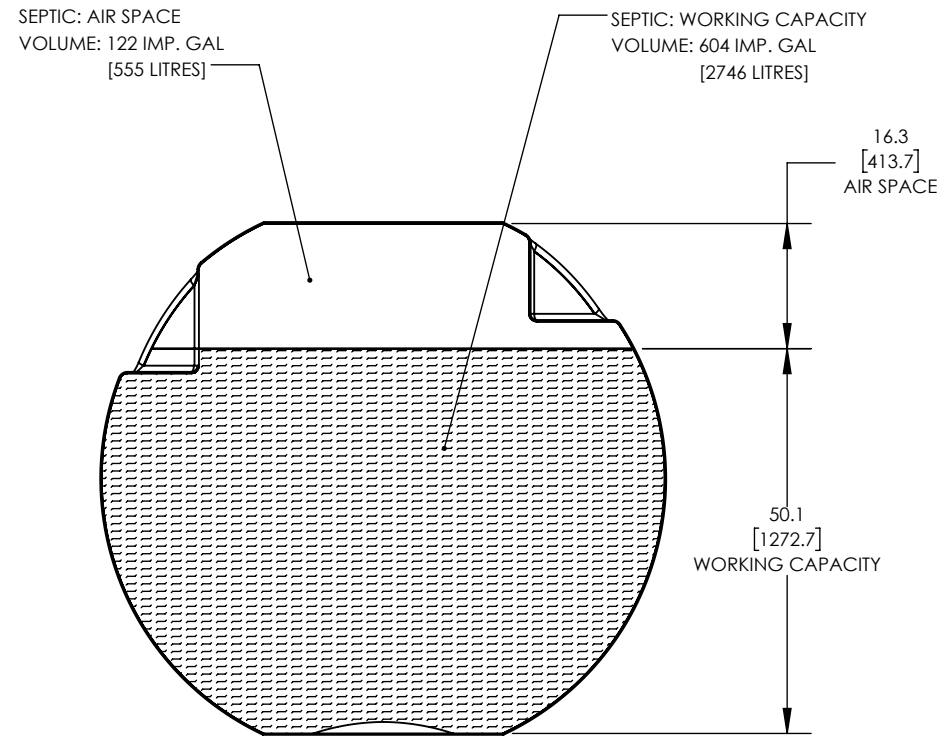
1

4

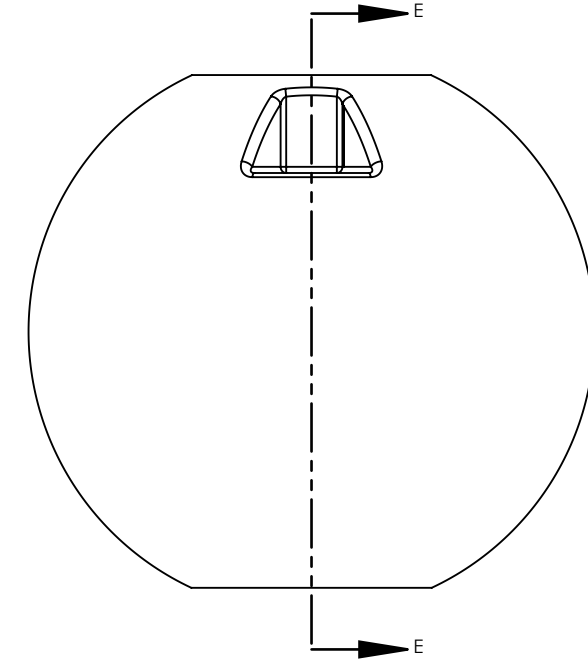
3

2

1



SECTION E-E  
SCALE 1 : 25



VOLUME TABLE						
COMPARTMENT	WORKING CAPACITY		AIR SPACE		TOTAL	
	IMP. GAL	LITRES	IMP. GAL	LITRES	IMP. GAL	LITRES
SEPTIC	604	2746	122	555	726	3301

**DIMENSIONS ARE IN INCHES**  
UNLESS OTHERWISE SPECIFIED

**TOLERANCES:**  
.X ±0.12  
.XX ±0.06  
.XXX ±0.03  
ANGULAR ±0.5°  
UNLESS OTHERWISE SPECIFIED

**MATERIAL:**  
FRP

**INITIAL RELEASE DATE:**

**DRAWN BY:** AZ

**CHECKED BY:**

REV	DATE	DRN	CHK	DESCRIPTION	INITIAL RELEASE
				1035 MISSION STREET WINNIPEG, MB, CANADA R2J 0A4 (204) 233-0671 WWW.CARLSONCOMPOSITES.COM INFO@CARLSONCOMPOSITES.COM	
<small>THE INFORMATION CONTAINED IN THIS DRAWING IS THE SOLE PROPERTY OF CARLSON ENGINEERED COMPOSITES INC.. ANY REPRODUCTION IN PART OR AS A WHOLE WITHOUT THE WRITTEN PERMISSION OF CARLSON ENGINEERED COMPOSITES INC. IS PROHIBITED.</small>					
<b>CSA LABEL:</b> CGR-3410H.6 HGN-3410H.6 CECGLB-750IG-H.6				<b>JOB NO:</b>	
<b>DWG. NO.</b> CECGLB-750IG-H.6				<b>SIZE</b> <b>REV</b> <b>B</b> <b>A</b>	
<b>SCALE:</b> NTS		<b>ESTIMATED WEIGHT:</b> 209 LBS/94 KG		<b>SHEET 3 OF 4</b>	

4

3

2

1