

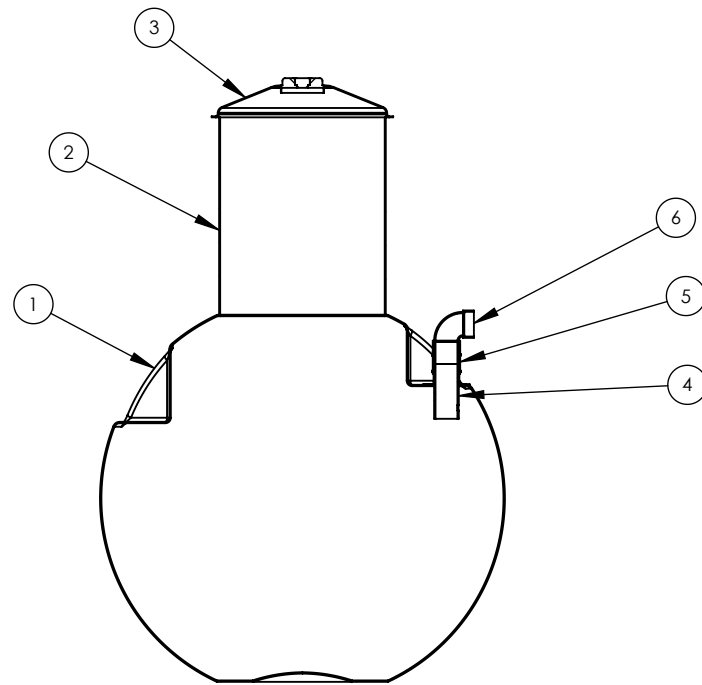
4

3

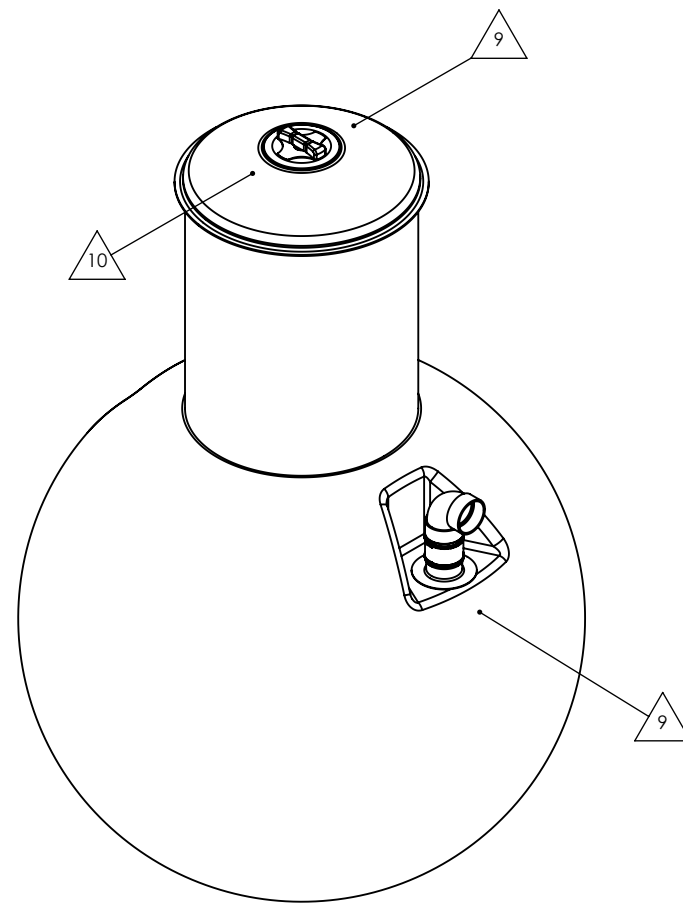
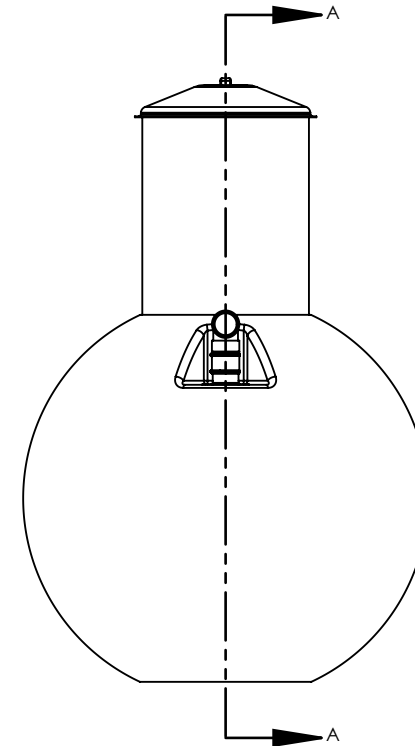
2

1

| ITEM NO. | PART NUMBER | QTY. |
|----------|---|------|
| 1 | CECGLB-750IG-H-TANK-2.14 | 1 |
| 2 | CECGLB-30IN-MANWAY-COLLAR-36IN | 1 |
| 3 | CEC-30IN-MANWAY-LID-NORWESCO | 1 |
| 4 | CEC-4INX10IN-LONG-FITTING-ASSY-W-1IN-HOLE | 1 |
| 5 | 4IN-FERNCO-FLEX-CPLG | 1 |
| 6 | 4INX90DEG-ABS-DWV-SHORT TURN ELBOW ASSY W 4IN EXTENSION | 1 |



SECTION A-A
SCALE 1 : 35



REFERENCE VIEW

NOTES:

1. HOLDING STYLE TANK
2. BURIAL DEPTH: UPTO 7FT (2.14 METERS) FROM GRADE TO TOP OF TANK
3. SPECIFIC GRAVITY: 1.1
4. RESIN: ORTHOPHTHALIC POLYESTER
5. MATERIAL: SPRAY CHOP HLU WITH 24 OZ WOVEN ROVING WHERE REQUIRED
6. DESIGNED AND CERTIFIED TO CSA B66 STANDARDS
7. OPTIONAL BELLED MANWAY EXTENSION LENGTHS AVAILABLE.
8. OPTIONAL MATERIAL FOR FITTINGS ABS, PVC, SDR AVAILABLE IN 4 INCH & 6 INCH CONFIGURATIONS.
9. TANK ID DECAL ATTACHED, AS SHOWN ON REFERENCE VIEW.
10. DANGER DO NOT ENTER DECAL WILL BE ATTACHED TO TOP OF LID, AS SHOWN ON REFERENCE VIEW



| REV | DATE | DRN | CHK | DESCRIPTION | INITIAL RELEASE |
|-----|------|-----|-----|-------------|-----------------|
| | | | AZ | | |

| | | | |
|---|--|---|--------------------------|
| <p>DIMENSIONS ARE IN INCHES <i>UNLESS OTHERWISE SPECIFIED</i></p> | | <p>1035 MISSION STREET WINNIPEG, MB, CANADA R2J 0A4 (204) 233-0671 WWW.CARLSONCOMPOSITES.COM INFO@CARLSONCOMPOSITES.COM</p> | <p>JOB NO:</p> |
| <p>TOLERANCES: .X ±0.12 .XX ±0.06 .XXX ±0.03 ANGULAR ±0.5° UNLESS OTHERWISE SPECIFIED</p> | | | |
| <p>MATERIAL: FRP</p> | | <p>CSA LABEL: CGR-3410H2.14 HGN-3410H2.14 CECGLB-750IG-H2.14</p> | <p>SIZE B</p> |
| <p>INITIAL RELEASE DATE:</p> | | | |
| <p>DRAWN BY: AZ</p> | | <p>DWG. NO. CECGLB-750IG-H2.14</p> | <p>REV A</p> |
| <p>CHECKED BY:</p> | | | |
| <p>SHEET 1 OF 4</p> | | | |

4

3

2

1

B

B

A

A

4

3

2

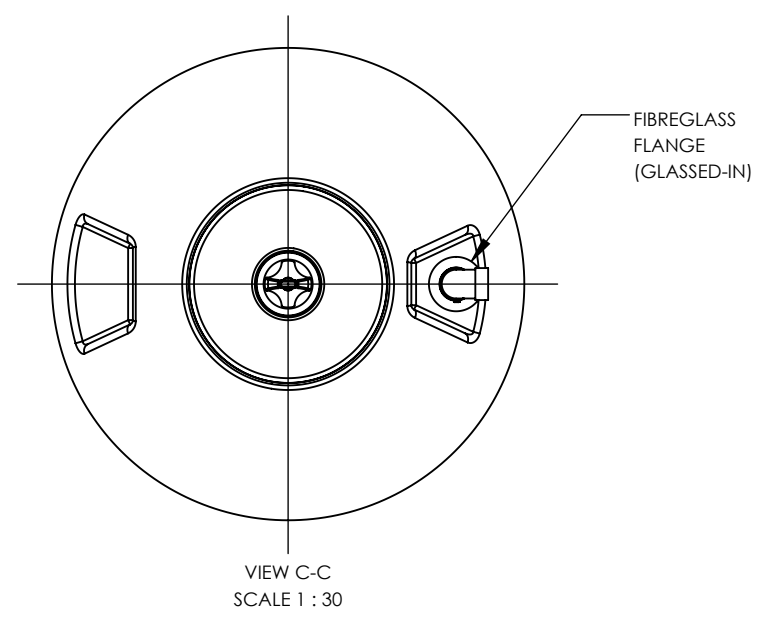
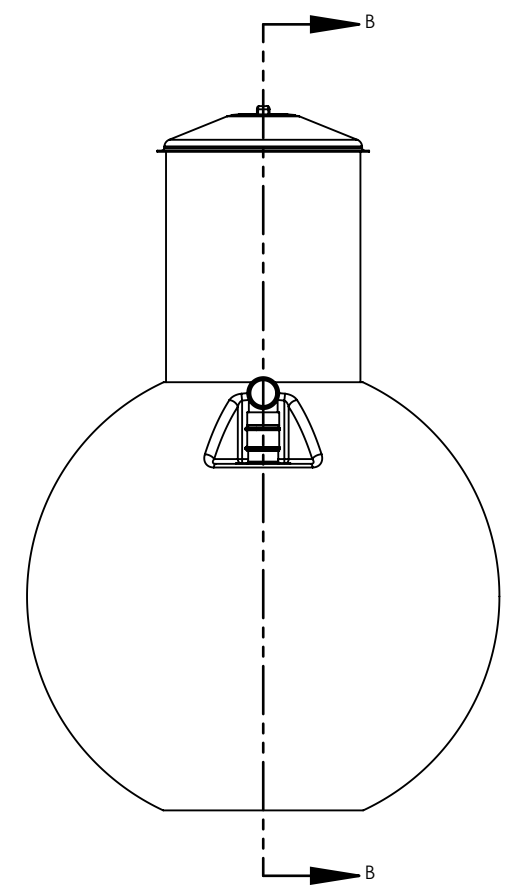
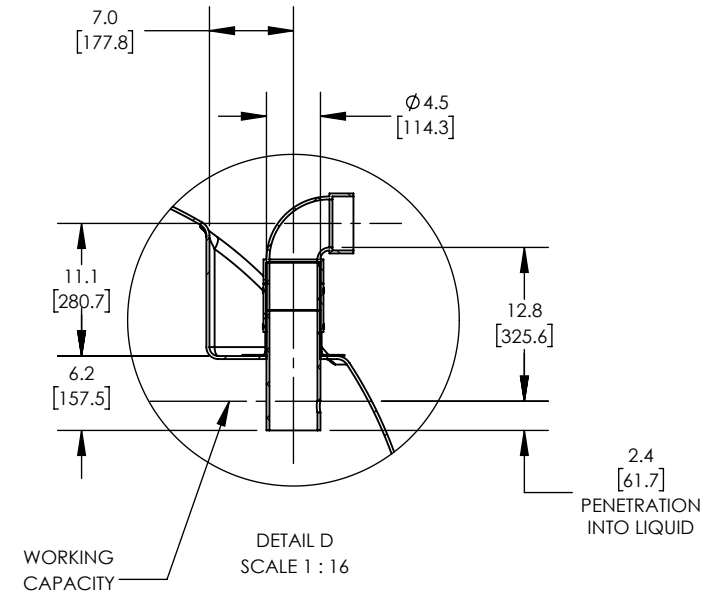
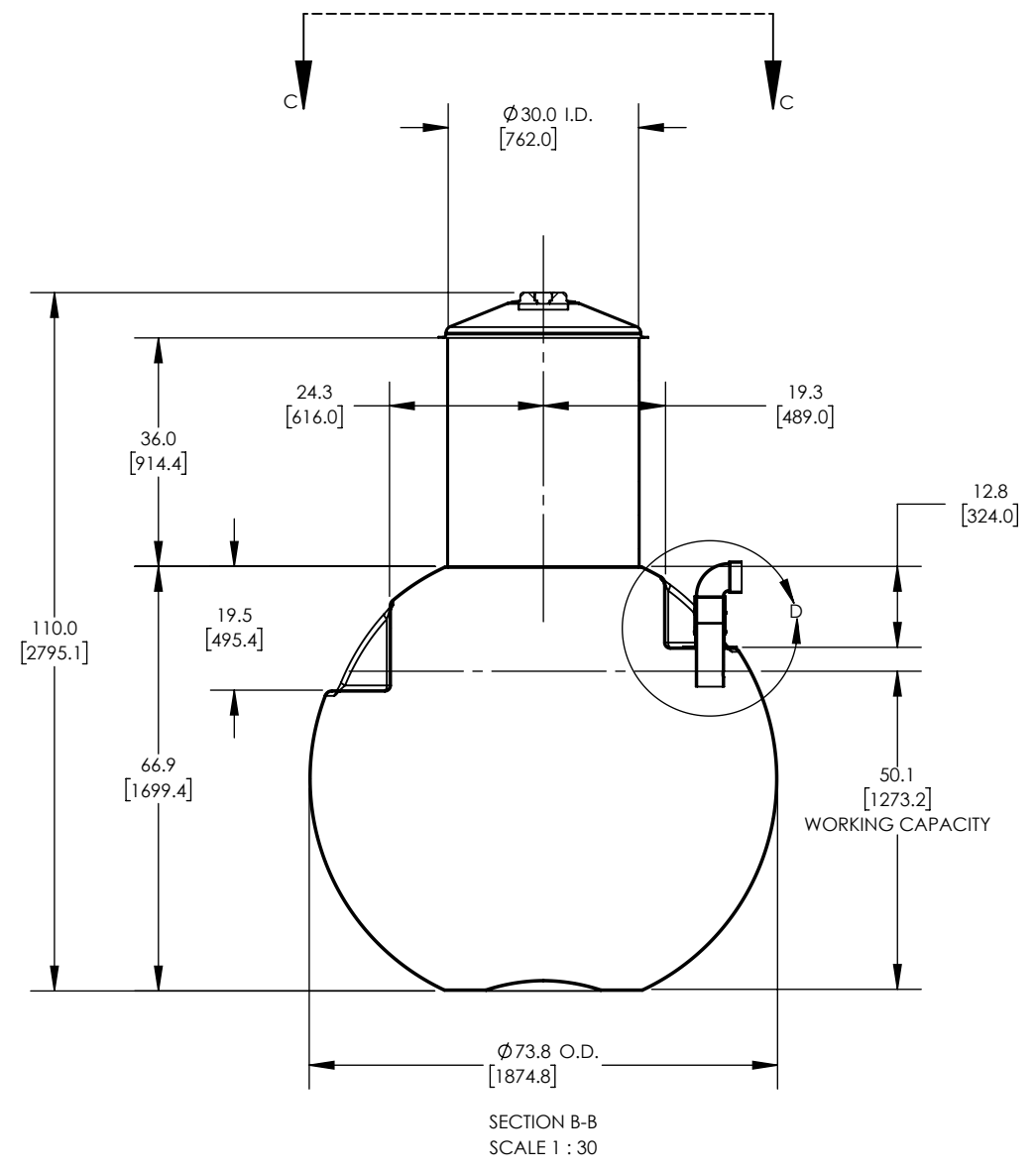
1

B

B

A

A



DIMENSIONS ARE IN INCHES
UNLESS OTHERWISE SPECIFIED

TOLERANCES:
.X ±0.12
.XX ±0.06
.XXX ±0.03
ANGULAR ±0.5°
UNLESS OTHERWISE SPECIFIED

MATERIAL:
FRP

INITIAL RELEASE DATE:

DRAWN BY: AZ

CHECKED BY:

| | | | | | |
|--|------|---|-----|------------------|--|
| REV | DATE | DRN | CHK | DESCRIPTION | INITIAL RELEASE |
| | | | | | |
| | | | | | 1035 MISSION STREET WINNIPEG, MB, CANADA R2J 0A4 (204) 233-0671 WWW.CARLSONCOMPOSITES.COM INFO@CARLSONCOMPOSITES.COM |
| THE INFORMATION CONTAINED IN THIS DRAWING IS THE SOLE PROPERTY OF CARLSON ENGINEERED COMPOSITES INC.. ANY REPRODUCTION IN PART OR AS A WHOLE WITHOUT THE WRITTEN PERMISSION OF CARLSON ENGINEERED COMPOSITES INC. IS PROHIBITED. | | | | | |
| CSA LABEL: CGR-3410H2.14 HGN-3410H2.14 CECGLB-750IG-H2.14 | | | | JOB NO: | |
| DWG. NO. CECGLB-750IG-H2.14 | | | | SIZE B | REV A |
| SCALE: NTS | | ESTIMATED WEIGHT: 273 LBS/123 KG | | | SHEET 2 OF 4 |

4

3

2

1

4

3

2

1

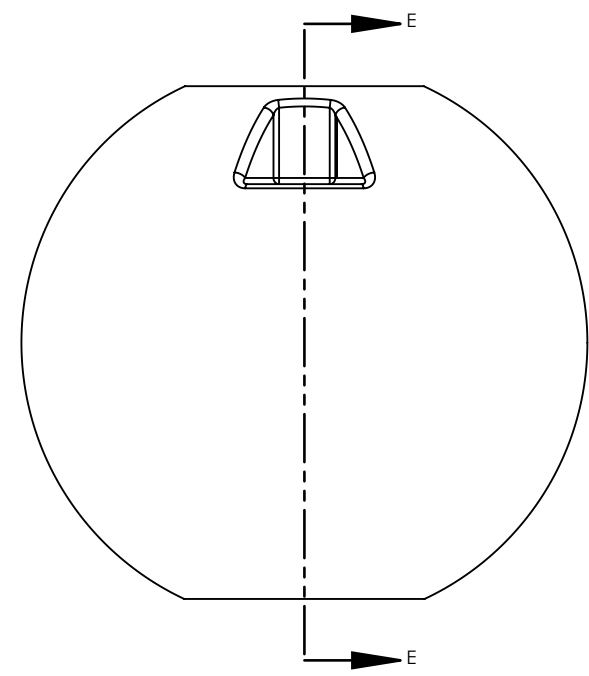
SEPTIC: AIR SPACE
VOLUME: 122 IMP. GAL
[555 LITRES]

SEPTIC: WORKING CAPACITY
VOLUME: 604 IMP. GAL
[2746 LITRES]

16.3
[413.7]
AIR SPACE

50.1
[1272.7]
WORKING CAPACITY

SECTION E-E
SCALE 1 : 25



B

B

A

A

VOLUME TABLE

| COMPARTMENT | WORKING CAPACITY | | AIR SPACE | | TOTAL | |
|-------------|------------------|--------|-----------|--------|----------|--------|
| | IMP. GAL | LITRES | IMP. GAL | LITRES | IMP. GAL | LITRES |
| SEPTIC | 604 | 2746 | 122 | 555 | 726 | 3301 |

DIMENSIONS ARE
IN INCHES
UNLESS OTHERWISE SPECIFIED

TOLERANCES:
.X ±0.12
.XX ±0.06
.XXX ±0.03
ANGULAR ±0.5°
UNLESS OTHERWISE SPECIFIED

MATERIAL:
FRP

INITIAL RELEASE DATE:

DRAWN BY: AZ

CHECKED BY:

| | | | | |
|-----|------|-----|-----|-----------------|
| REV | DATE | DRN | CHK | DESCRIPTION |
| | | | AZ | INITIAL RELEASE |

CARLSON ENGINEERED COMPOSITES
 1035 MISSION STREET
 WINNIPEG, MB, CANADA R2J 0A4
 (204) 233-0671
 WWW.CARLSONCOMPOSITES.COM
 INFO@CARLSONCOMPOSITES.COM

THE INFORMATION CONTAINED IN THIS DRAWING IS THE SOLE PROPERTY OF CARLSON ENGINEERED COMPOSITES INC.. ANY REPRODUCTION IN PART OR AS A WHOLE WITHOUT THE WRITTEN PERMISSION OF CARLSON ENGINEERED COMPOSITES INC. IS PROHIBITED.

CSA LABEL: CGR-3410H2.14
HGN-3410H2.14
CECGLB-750IG-H2.14

DWG. NO. CECGLB-750IG-H2.14

SCALE: NTS ESTIMATED WEIGHT: 273 LBS/123 KG

JOB NO:

SIZE B REV A

SHEET 3 OF 4

4

3

2

1